



Land For Sale

Roopville, GA



ID # 3025

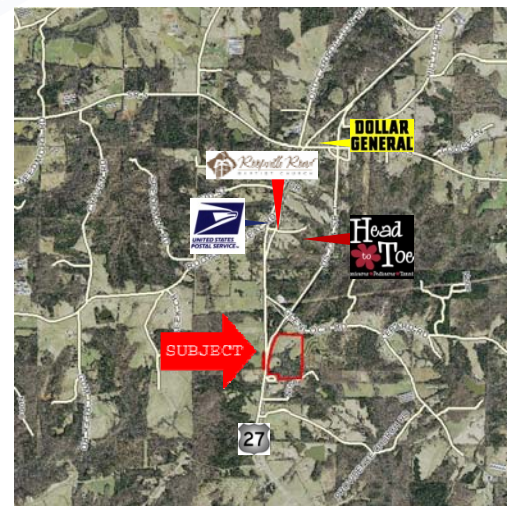
Commercial Real Estate and Investments



Purchase Price: \$6,750 Per Surveyed Acre

PROPERTY HIGHLIGHTS:

- Address: 0 Highway 27 S, Roopville, GA 30170
- Parcel Number: 083 0023
- Acres: 56.01±
- Zoning: A- Agriculture (4 ac min.)
- Topography: Gently Rolling
- Road Frontage: 1,700± ft. on Hwy 27 S
- High Traffic Count: 6,870 VPD on Hwy 27 S
- 1.7 Miles from intersection of Hwy 27 S and Hwy 5
- Utilities: Natural Gas, Public and Well Water, Septic



This marketing package is based upon information obtained from sources believed to be accurate. No warranty or representation, express or implied, is made as to the accuracy of the information contained herein, and same is subject to errors and omissions, change of sale price or lease price, and any other conditions related to this listing. It is the responsibility of the recipient of this information to independently confirm its accuracy and completeness.

For more information contact:

Roxy Robinson, Agent
206 Mandeville Avenue
Carrollton, GA 30117

T- 770-834-9999
F- 770-834-7773
E- Roxy@DermoRealty.com

www.DermoRealty.com



Land For Sale

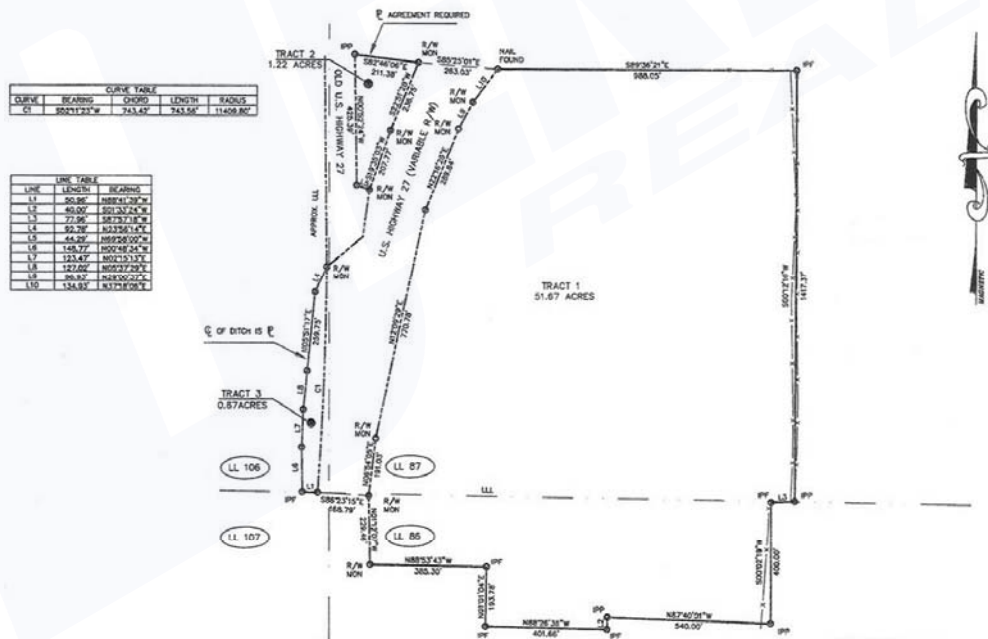
Roopville, GA

ID # 3025

0 Highway 27 S, Roopville, GA



Aerial Photo



Plat

This marketing package is based upon information obtained from sources believed to be accurate. No warranty or representation, express or implied, is made as to the accuracy of the information contained herein, and same is subject to errors and omissions, change of sale price or lease price, and any other conditions related to this listing. It is the responsibility of the recipient of this information to independently confirm its accuracy and completeness.

For more information contact:

Roxy Robinson, Agent
206 Mandeville Avenue
Carrollton, GA 30117

T- 770-834-9999
F- 770-834-7773
E- Roxy@DermaRealty.com

www.DermaRealty.com

