

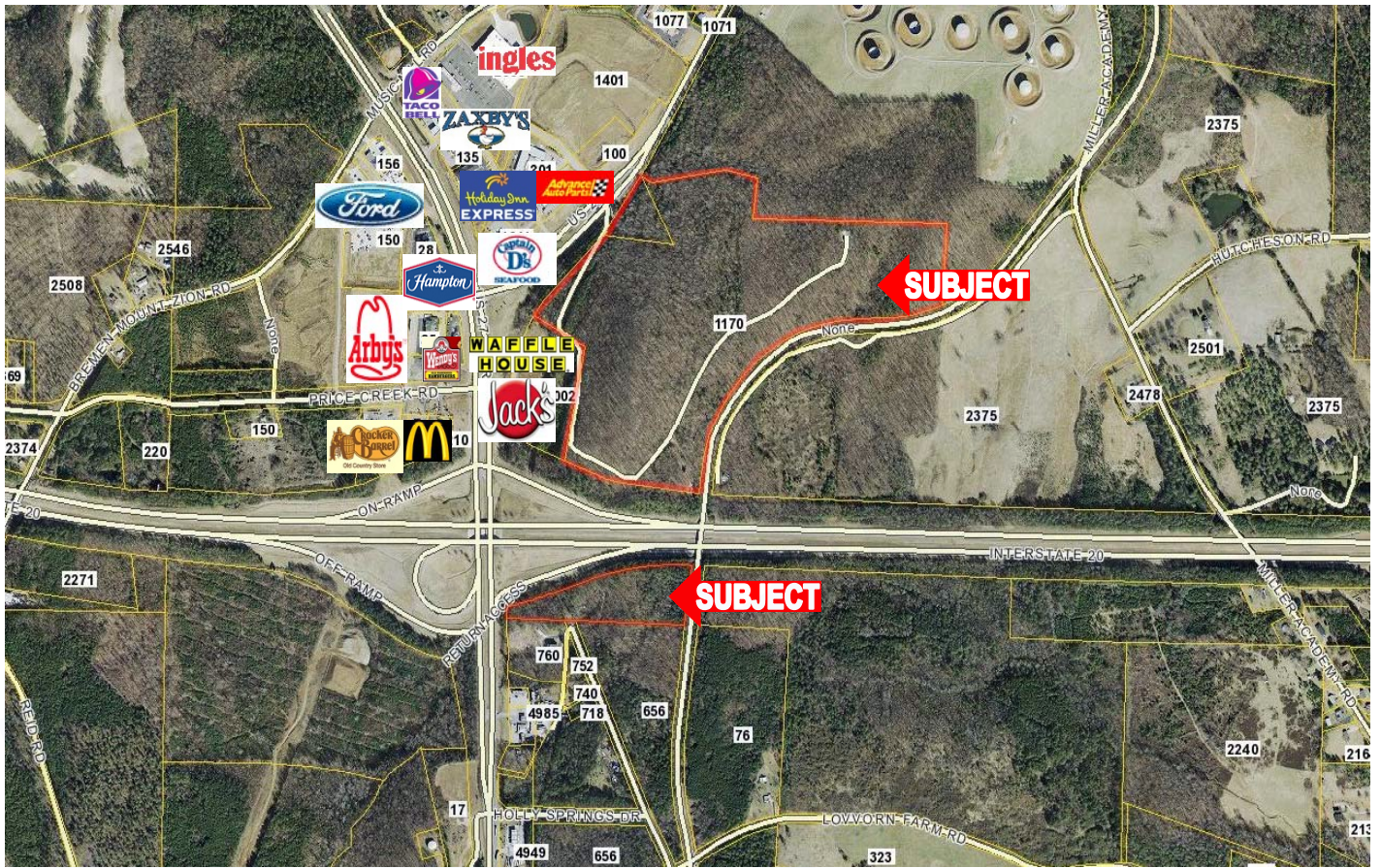
# Vacant Land

Bremen, GA



ID # 4019

Commercial Real Estate and Property



## PROPERTY HIGHLIGHTS:

- Purchase Price: \$1,750,000
- Acres: 102.79

95.79-Acre Tract: Northeast corner of Interstate 20 and U.S. Highway 27 (Exit 11)

7.00-Acre Tract: Southeast corner of Interstate 20 and U.S. Highway 27 (Exit 11)

- Zoning: Commercial
- Utilities: Water, Sewer & Gas
- This area is one of West Georgia's most aggressive ones with an extensive amount of development and construction underway and in progress.
- Owner Will Subdivide

This marketing package is based upon information obtained from sources believed to be accurate. No warranty or representation, express or implied, is made as to the accuracy of the information contained herein, and same is subject to errors and omissions, change of sale price or lease price, and any other conditions related to this listing. It is the responsibility of the recipient of this information to independently confirm its accuracy and completeness.

### For more information contact:

Roxy Robinson, Agent  
206 Mandeville Avenue  
Carrollton, GA 30117

T- 770-834-9999  
F- 770-834-7773  
E- Roxy@DermoRealty.com

[www.DermoRealty.com](http://www.DermoRealty.com)

